

fy 2023
annual
report



Chittenden Solid Waste District

a message from cswd's board chair and executive director

FY 2023 WAS A GREAT YEAR FOR CSWD

We welcomed the City of Essex Junction as a new member community! Their addition brings our District to an impressive strength of 19 towns.

Financials at the District continue to remain strong, despite a small dip in revenue this year. The District's FY23 total operating expenses were \$13,171,211 and operating revenues were \$13,179,141.

According to our waste diversion study for calendar year 2022, the residents, businesses, and institutions from our 19 member towns and cities diverted 55% of their municipal solid waste (MSW) from the landfill. This is a historic high for CSWD and by comparison, significantly more than the 32% US diversion rate for MSW reported by the Environmental Protection Agency (EPA) in 2018, the most recent data available. The data also shows that organics continue to be our biggest opportunity when it comes to diversion making up almost 30% of the material going to the landfill. This will continue to be a key focus for our services and education and outreach.

A FOCUS ON FACILITIES

Voters Approve a New Materials Recycling Facility

The biggest news from FY2023 is the overwhelming support we received from the communities we serve to build a new Materials Recycling Facility (MRF). We know Vermonters have a passion for recycling and last November they voted to make it a priority. More than 80% of Chittenden County voters authorized CSWD to issue general obligation bonds to fund construction of the new MRF. A heartfelt thank you for the support we received for this important project. The new modern MRF will be more efficient and effective,

providing meaningful environmental benefits and reduce Vermont's carbon footprint and designed with the ability to adapt to future changes in recyclable materials, some of which are still on the drawing board or even ones we can't imagine just yet.

CSWD will supplement the \$22 million in approved general obligation bonds and notes with funds from reserves and grants. We have already received a \$250,000 grant from the Recycling Partnership that will allow us to purchase optical sorting equipment for plastic containers, which is a great example of the modern technology that will be featured at the new facility. The loans will be repaid from MRF operating revenue. We are currently in the design and permitting process. Our goal is to break ground next year and be up and running in 2025.

Improvements at Organics Recycling Facility

Significant improvements were made at CSWD Organics Recycling Facility (ORF) including site work to reconfigure the operations and traffic flow, relocation of the commercial scale and renovation of an existing building to house the main office. The site was reconfigured for increased efficiency in operations, to improve traffic safety entering and exiting the facility, and to accommodate the addition of natural wood waste drop-off for the public. The scale, utilized by commercial haulers for food scrap drop-off, is now conveniently located at the new entrance to the facility next to the new ORF office providing a much-improved eagle's nest view of the area for our team.

New Digs for the Admin Team

We are excited to finally have an updated and modern 'home base'. We moved into our new administrative office on Gregory Drive in South Burlington in March. We'd been in our former location on Redmond Road in Williston for over

25 years, and while it had always felt like home (and was a retrofitted raised ranch!), we simply outgrew the space. The original plan was to construct a new Administrative Office building on Redmond Road, but the cost of construction was prohibitive. Instead, we entered into a long-term lease with the City of South Burlington to rent space in one of their municipal buildings. Our new space, co-located with the South Burlington Police, was retrofitted to include 18 offices, one large conference room, a small conference

room, drop-in stations, a welcome area, working kitchen and plenty of natural light. It has been wonderful to be able to collaborate and communicate safely with one another in such a beautiful space. The new conference rooms mean that we no longer need to utilize space at the Williston Town Offices for our monthly meetings. We want to thank the Town of Williston for being such a wonderful host for so many years!

CELEBRATING OUR PEOPLE

Employees

CSWD is proud to employ 55 Vermonters who are passionate about reducing waste and committed to helping others do the same. We take great pride in our people and want to celebrate their impressive milestones as District employees:

32 years Jennifer Holliday, Director of Public Policy and Communications

32 years Gary Winnie, Hazardous Waste Supervisor

31 years Amy Jewell, Director of Administration

30 years J. Todd Dutil, DOC Operator Class 1

Board of Commissioners

The District is overseen by a dedicated Board of Commissioners who are appointed by local leaders to represent their member towns and cities. These individuals are deeply committed to CSWD's mission to reduce and manage the solid waste generated within Chittenden County in an environmentally sound, efficient, effective and economical manner. Their volunteer service is not only impressive, but truly appreciated. New Board members include:


Andrew French – Richmond
Rachel Kennedy (Alternate) – Winooski
Matt Lawless (Alternate) - Shelburne
Jaymi Cleland – St. George

Thank you to the following for your years of service, we wish you well:

Logan Hegg - Richmond
Dr. Ron Stotyn - Winooski

Our Board and our team are focused on the future and continuing to challenge ourselves and each other to create innovative and economical solutions to reducing and managing waste.




Paul Ruess
Chair, Board of Commissioners




Sarah Reeves
Executive Director

who we are

We are a municipal district created in 1987 to oversee and manage solid waste in Chittenden County.

CSWD serves about a quarter of the population of Vermont (169,301 residents and 8,092 businesses)* with facilities, programs, and expertise developed over our 34-year history.

**2022 data. Sources: U.S. Census and VT Dept. Of Labor*

OUR MISSION

The Chittenden Solid Waste District's mission is to reduce and manage the solid waste generated within Chittenden County in an environmentally sound, efficient, effective and economical manner.

OUR VISION

Products are designed to be reused or recycled and our community fully participates in minimizing disposal and maximizing reuse and recycling.

HOW WE'RE FUNDED

Our revenue comes from three primary sources:

- **User fees** on incoming material at our facilities;
- **The Solid Waste Management Fee (SWMF)**, a per-ton fee on material sent to the landfill;
- **Material and product sales** from material we collect and process at our facilities and sell;
- A small, variable percentage of our funding comes from **State grants for hazardous waste and other materials management**.

We are not funded by Income, Sales, or Property tax dollars.

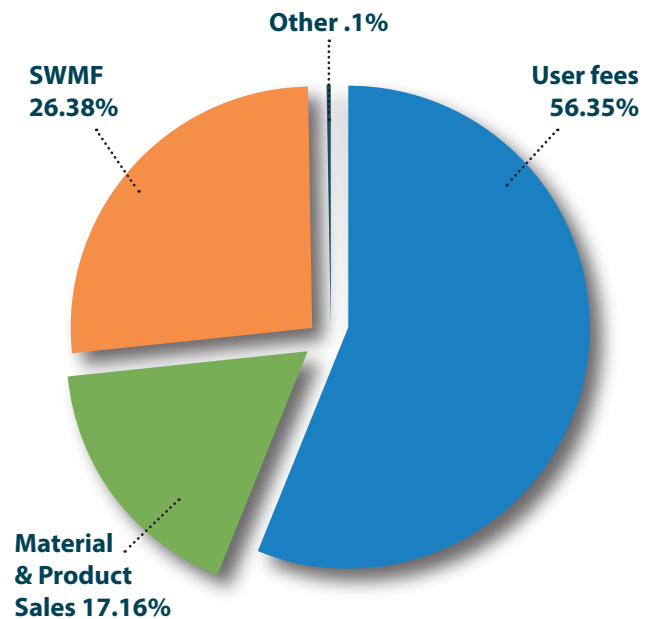
CHITTENDEN COUNTY, VT



2022 data. Sources: U.S. Census and VT Dept. of Labor

FY23 REVENUE \$13.2M

(unaudited)



Income, Sales, or Property Taxes 0%

what we do

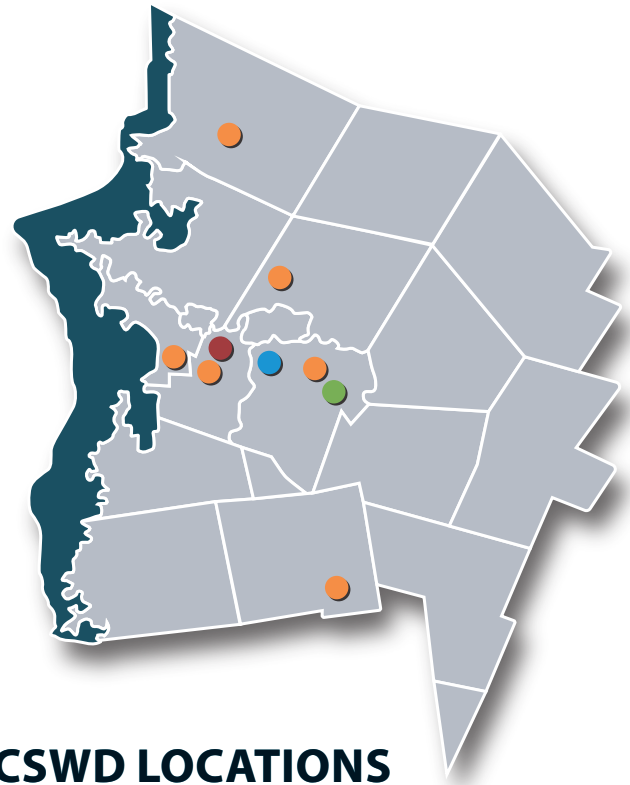
REDUCE WASTE

- › **Educate residents, businesses, schools, and event leaders** on waste prevention and diversion
- › **Promote community reuse options**
- › **Process leftover paint** from residents and businesses into Local Color Paint
- › **Maintain and enforce our Ordinance**, which includes waste prevention and diversion requirements
- › **Help our members** comply with federal and state solid waste laws
- › **Provide facilities and tools** to help members prevent waste and maximize diversion from the landfill to recycling, composting, and other resource recovery
- › **Advocate for state-wide policies** that will reduce waste

MANAGE MATERIALS

Our facilities:

- › **The only municipally owned Materials Recycling Facility** (blue-bin recyclables sorting center) in Vermont
- › **Six regional Drop-Off Centers** for household trash, recycling, organics, and special materials
- › **A comprehensive hazardous waste program for households and small businesses** that includes a permanent year-round collection facility *and* a seasonal mobile collection unit
- › **The state's largest Organics Diversion Facility** (home of Green Mountain Compost) turning food scraps and yard trimmings into compost and soil blends supporting local soils



CSWD LOCATIONS

- **Drop-Off Centers**
- **Environmental Depot**
- **Materials Recycling Facility**
- **Organics Recycling Facility** (Green Mountain Compost)

SUPPORT OUR MEMBERS

- › **Technical expertise and support** for waste-related RFPs and studies
- › **Grant funding**
 - › Community Cleanup Fund for all member towns
 - › Waste Reduction Container and Project Grants
- › **Brokering and investigation** of beneficial use options for biosolids
- › **Green Up Vermont donation** on behalf of all member towns;
- › **Outreach and education**

how we're doing

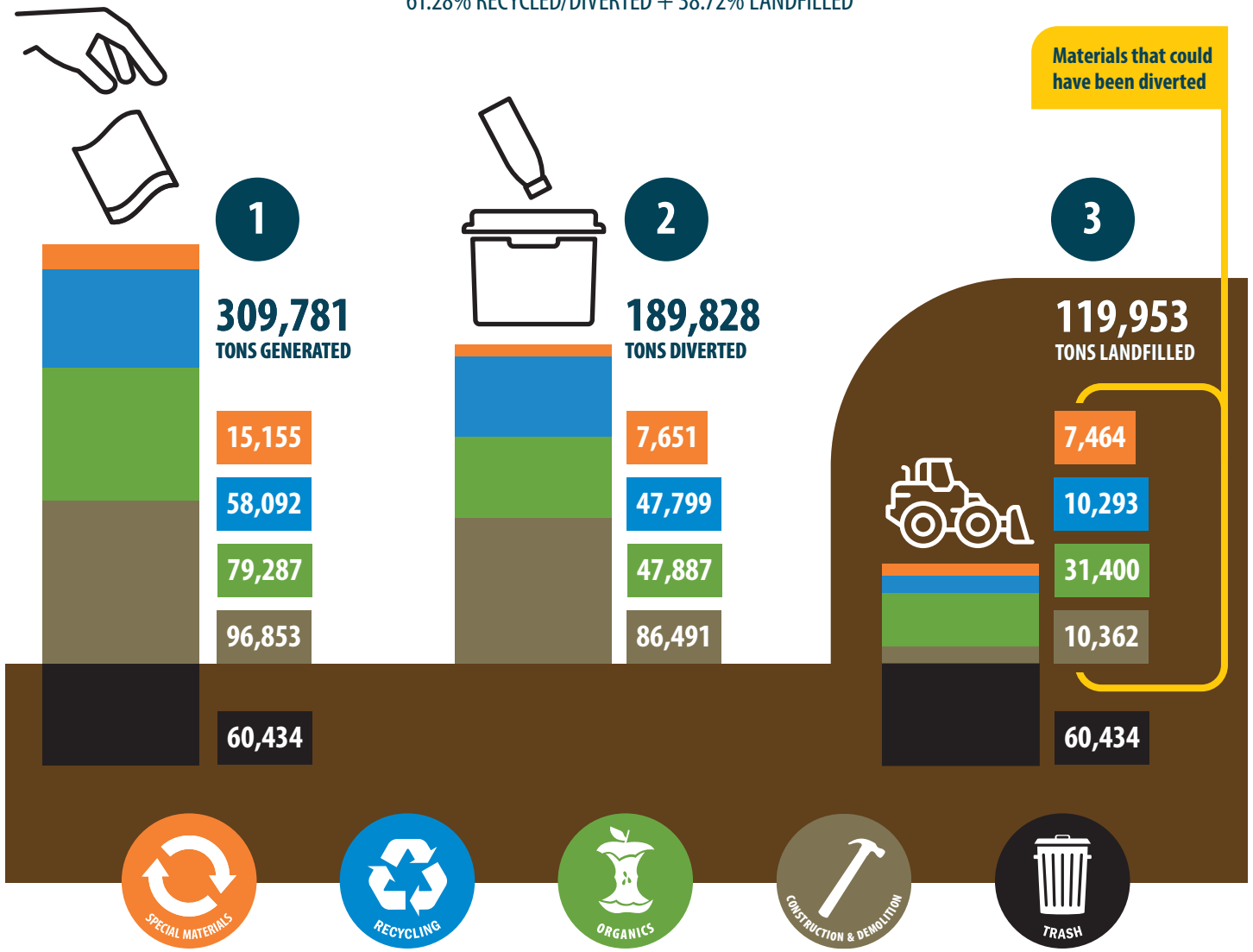
This graphic shows three key measurements of all the materials that individuals and businesses in Chittenden County, VT generated in 2022:

1. An estimate of how much "stuff" we all generated and needed to manage as solid waste in 2022.
2. Which stream all that stuff went to via recycling or composting.
3. How much recoverable material our community chose to send to the landfill instead of keeping it out of the trash by using a currently available program or facility.

Full details are available in the 2022 CSWD Diversion Report.

100% MATERIALS GENERATED (309,781 tons)

61.28% RECYCLED/DIVERTED + 38.72% LANDFILLED



financial reports

Statement on Net Position DRAFT

	FY2023	FY2022
ASSETS		
Current Assets		
Cash & Cash Equivalents	\$9,885,005.67	\$15,316,427.68
Investments	4,270,487.54	54,591.96
Receivables (Net of Allowance)	2,130,671.44	1,962,949.71
Inventories	209,650.83	404,233.63
Prepaid Expenses	112,248.07	78,325.08
Total Current Assets	<u>\$16,608,063.55</u>	<u>\$17,816,528.06</u>
Noncurrent Assets		
Capital Assets		
Land	5,290,800.82	5,290,800.82
Assets in Progress	2,599,861.49	313,939.62
Other Capital Assets Net of Accumulated Depreciation	7,784,048.44	8,103,261.49
Total Noncurrent Assets	<u>15,674,710.75</u>	<u>13,708,001.93</u>
Total Assets	\$32,282,774.30	\$31,524,529.99
LIABILITIES		
Current Liabilities		
Accounts Payable	790,123.64	536,531.48
Accrued Payroll & Benefits Payable	76,114.72	61,376.02
Unearned Revenue	110,082.84	98,060.84
Security Deposits Payable	7,350.00	7,350.00
Accrued Compensated Time	286,167.00	16,180.53
Post Closure Costs Payable (current)	138,300.58	138,300.58
Other Accrued Expenses	41,405.17	40,947.28
Total Current Liabilities	<u>1,449,543.95</u>	<u>898,746.73</u>
Noncurrent Liabilities		
Compensated Absences Payable	-	319,099.14
Post Closure Costs Payable (noncurrent)	378,379.37	378,379.37
Total Noncurrent Liabilities	<u>378,379.37</u>	<u>697,478.51</u>
Total Liabilities	1,827,923.32	1,596,225.24
Net Position		
Net Investment in Capital Assets	13,074,849.26	13,394,062.31
Restricted	1,004,593.08	830,792.04
Unrestricted	<u>16,375,408.64</u>	<u>15,703,450.40</u>
Total Net Position	\$ 30,454,850.98	\$ 29,928,304.75

financial reports

Statement of Revenue, Expenses and Changes in Net Position DRAFT

Operating Revenues	
Tipping Fees	7,425,861
Solid Waste Management Fees	3,476,118
Sale of Materials	2,261,553
License Fees	15,423
Miscellaneous	187
	<hr/>
Total Operating Revenues	13,179,141
Operating Expenses	
Administration	1,505,412
Biosolids Program	1,186,719
Community Support	32,346
Drop Off Centers	2,936,165
Enforcement	175,088
Finance	543,143
Hazardous Waste	822,488
Materials Recycling Facility	3,095,149
Operating Administration	122,056
Organics Recycling Facility	981,646
Property Management	74,953
Waste Reduction	366,032
Change in Estimated Future Landfill Post Closure Costs	310,752
Depreciation	1,019,262
	<hr/>
Total Operating Expenses	13,171,211
Operating Income	7,930
Non-Operating Revenue/Expenses	
Rental Income	73,500
Investment Income	172,202
Interest Expenses	-
Grant Income	106,850
Other Income	171,502
Net Gain (Loss) on Disposal of Assets	(5,437)
	<hr/>
Total Non-Operating Revenue/Expenses	518,617
Change in Net Position	526,547
Net Positions Beginning of Year	29,928,305
Net Position End of Year	30,454,851

Chittenden Solid Waste District

19 Gregory Drive
Suite 204
South Burlington, VT 05403

Phone: (802) 872-8100

Fax: (802) 878-5787

www.cswd.net



facebook.com/cswdvt



instagram.com/cswdvt



youtube.com/cswdvt

*This Annual Report is available at
www.cswd.net.*



Chittenden Solid Waste District